

PDMS Appware for Branch Modification

31.3.2005

© Copyright VIZIO s. r. o. 2005

PDMS is product of AVEVA Solutions Ltd., High Cross, Madingley Road, Cambridge UK.
Information contained in this document may be subject to change without notice.

1. Introduction

This application can be used for complex manipulation with the pipes (PDMS type BRAN) in module PDMS Design. It is helpful for specification modification (pspe) followed by automatic reselection of all pipe components, changing insulation and tracing specifications. Besides it is possible to apply all modifications described above to single pipe component. All actions are made 'virtually' and the real modifications are written to database after confirmation.

2. Appware Installation

This application can be used for PDMS 11.6. For installation itself it is necessary to run the installation programme which will guide you through the installing process. Follow the on screen instructions. Note that when you choose the folder where the appware is installed to, the path must not contain any space. Path to this folder has to be added into the definition of variable %PMLLIB%. This variable is usually declared in file %PDMSEXE%\Evars.bat.

3. Start and functions

Application can be started from the menu "Pipework Application" by **Modify>Bran>Specification...** or directly from the command line by writing command SHOW !!MODBRAN.

The following window will appear on the screen.

Reselect Branch

CE 150-A-57-B2

Spec: A1A Head bore 150mm

Insu: W Tracing: Unset

Members

Type	Component Description	Bore	Tube Description
ELBO	ELBOW LR ANSI B16.9 BW	150.00	PIPE SCH40 ANSI B36.10
ELBO	ELBOW LR ANSI B16.9 BW	150.00	PIPE SCH40 ANSI B36.10
FLAN	FLANGE WN ANSI B16.5 #150.RF	150.00	PIPE SCH40 ANSI B36.10
GASK	GASKET RF 1.5MM ANSI B16.5 #150	150.00	PIPE SCH40 ANSI B36.10
VALV	VALVE GATE ANSI B16.10 #150.RF	150.00	PIPE SCH40 ANSI B36.10
GASK	GASKET RF 1.5MM ANSI B16.5 #150	150.00	PIPE SCH40 ANSI B36.10
FLAN	FLANGE WN ANSI B16.5 #150.RF	150.00	PIPE SCH40 ANSI B36.10
ELBO	ELBOW LR ANSI B16.9 BW	150.00	PIPE SCH40 ANSI B36.10
REDU	REDU CONC ANSI B16.9 BW	150.00/100.00	PIPE SCH40 ANSI B36.10
FLAN	FLANGE WN ANSI B16.5 #300.RF	100.00	PIPE SCH40 ANSI B36.10
GASK	GASKET RF 1.5MM ANSI B16.5 #300	100.00	PIPE SCH40 ANSI B36.10

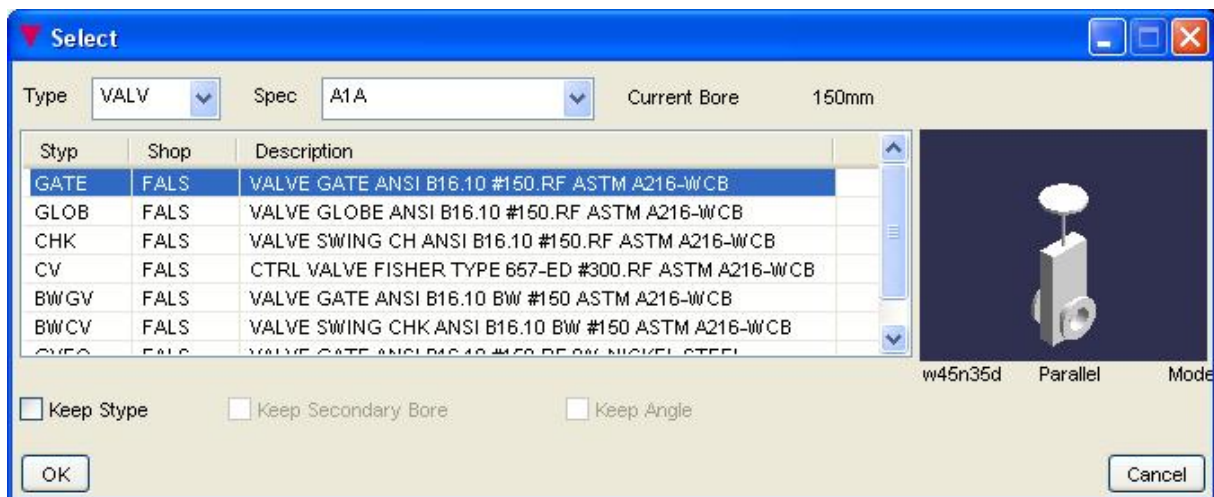
Navigate on selection Show Details

Apply Reset Dismiss

Current settings on level BRAN is shown together with list of branch members. Pipe components are described by PDMS type and component detail text from catalogue (dtxr) as well as description of leave tube. If any pipe component does not have a valid specification reference (spref) then the button **"Apply"** is not active.

Specification modification is automatically applied to whole branch (BRAN). When the branch specification is changed each branch component – member – will keep STYP (in the case that it is defined in specification), nominal diameter and for component types ELBO and BEND also angle and radius is kept (if defined). If there is no item with proper setting the pipe component will be left without valid specification reference.

It is possible to set specification reference for each pipe component separately (choose it from catalogue). The particular component has to be marked in the list of branch members and by pressing right mouse button new menu will be shown. After choosing "Select" the following window will appear on screen:



When the toggles **"Keep Style"**, **"Keep Secondary Bore"** (valid for TEE, OLET and REDU) and **"Keep Angle"** (valid for ELBO and BEND) are switched on the selection is limited by number of components keeping the original values. It is also possible to choose a component from different specification and in some particular cases also type of component can be selected. The appearance of component information in this window can be set by standard option form from the main menu **Settings>Choose Options...**

By choosing "Select Tube" on the right mouse button the same window will appear which allows to select leave tube of marked pipe component.

Settings for insulation and tracing – when switching on toggle **"Show Details"** the following window will pop up:



These specifications can be set for component currently chosen from the list. When the current pipe component is changed this window is automatically updated and stays on the screen until the proper toggle is switched off or the main window is closed.

When the toggle "**Navigate on selection**" (on the main window) is switched on then the chosen component in the list is automatically becoming to be PDMS Current element (CE). This works in both ways – component identified by cursor in graphic view or in “Members” list will be also marked as current in the application list. It is assumed that member of current branch is identified.

Important:

All modifications will be done after hitting button "**Apply**" on the main window. Up to this moment no modification is written to any database.